

Rail-to-Water Be

Highlights of Burlington Rail- road activities in Wyoming during 1962 included participation in the first rail-to-water shipment of Wyoming bentonite, acquisition of new industrial sites and location of steam locomotives at two display locations.

Transportation history was made when the first shipment of Wyoming bentonite clay — some 8,000 tons — was originated by the Burlington and transferred at Chicago to a lake vessel for shipment to Canada.

In addition to being the first ship load of bentonite via the Port of Chicago, it was the first bulk shipment of Wyoming bentonite ever to be transported in open top hopper cars, and the first to be transferred directly from rail cars to vessel. A total of 115 carloads comprised the record shipment.

With new iron-ore pelletizing plants being constructed in Canada, annual shipments of 150,000 tons are considered a possibility for the near future. Supplying the first 8,000-ton order were Archer-Daniels-Midland, Upton, Black

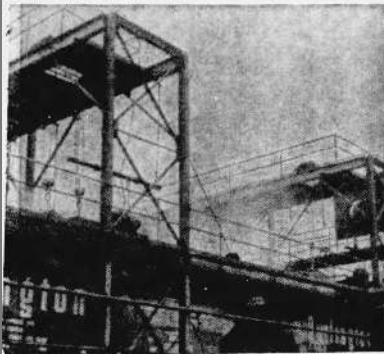
Hills Bentonite, Moorcroft, and Magnet Cove Barium, Greybull.

LOCOMOTIVE ON DISPLAY
Burlington steam locomotives were placed on permanent display at the State Fair Grounds, Douglas, and at Sheridan as mementoes of the romantic past of the Iron Horse and its contribution to the opening of the West.

Looking ahead to providing sites for shippers, the road acquired 23 acres at Casper to meet the need for future industrial development. At the industrial development conference held at Casper in November, O. O. Waggoner, Burlington's industrial director, was a featured speaker. His department is currently working with several firms that have expressed interest in locating a plant in Wyoming.

In 1962, the Burlington paid 561 Wyoming employees \$3,736,657 in salaries and wages. \$4.4 million were spent on train operations in the state, and an additional \$2.9 million was spent for equipment maintenance.

At Lovell, 54 feet of heavier rail was installed to accommodate a



—Burlington Railroad Photo

Pictured is part of the record bentonite shipment from Wyoming, comprising 115 rail cars carrying 8,000 tons, being handled through the Port of Chicago. It was the first bulk bentonite shipment ever to be transferred to a lake vessel.

Shipment to Canada Is First Rail to Water Transport

Clipped By:



seabix1

Wed, Apr 29, 2020